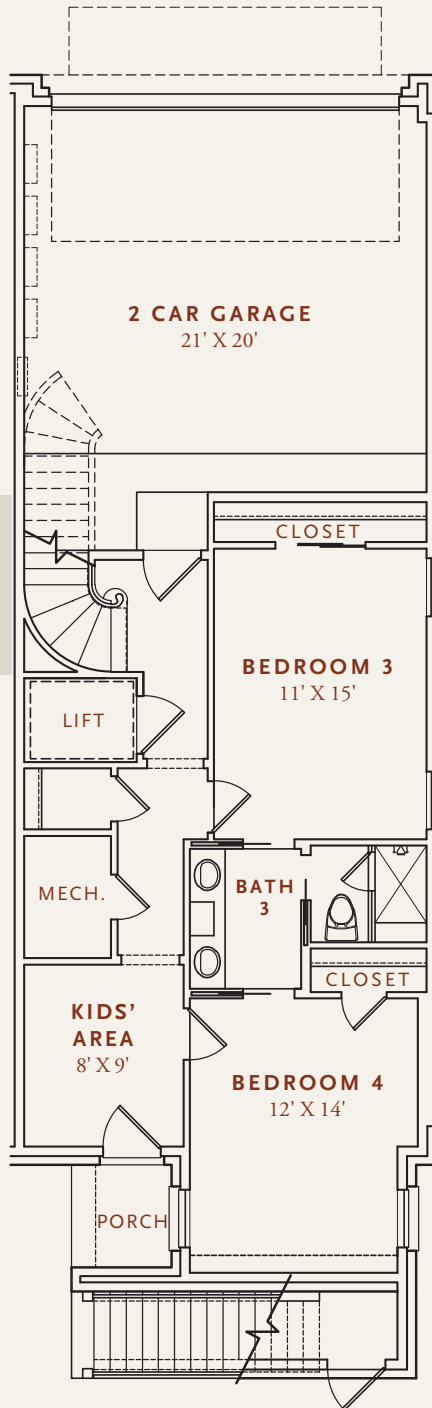


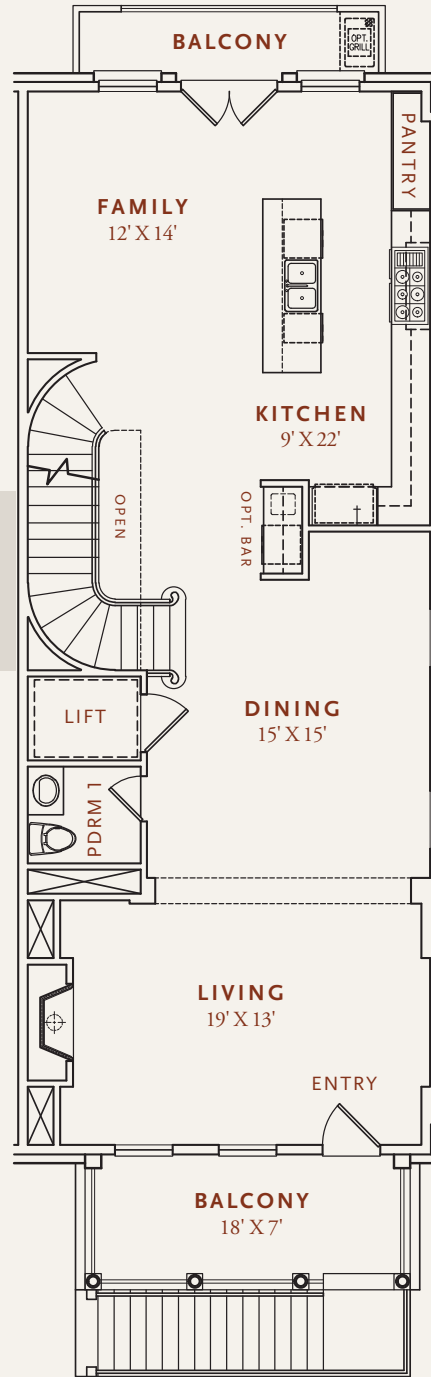
INDOOR: 3,816 SF | OUTDOOR: 853 SF

TOTAL LIVING: 4,669 SF

LEVEL 1



LEVEL 2



**THE JEFFERSON** A spacious 4 bedroom, 3 full bath and 2 half bath Southern Traditional Architecture inspired Crain Square home. The first floor consists of two private Guest Suites and an oversized two-car garage. The second floor features the main living and entertaining spaces with formal Living and Dining rooms, gourmet Kitchen, a Family Room and two Balconies, one on each end of the floor.

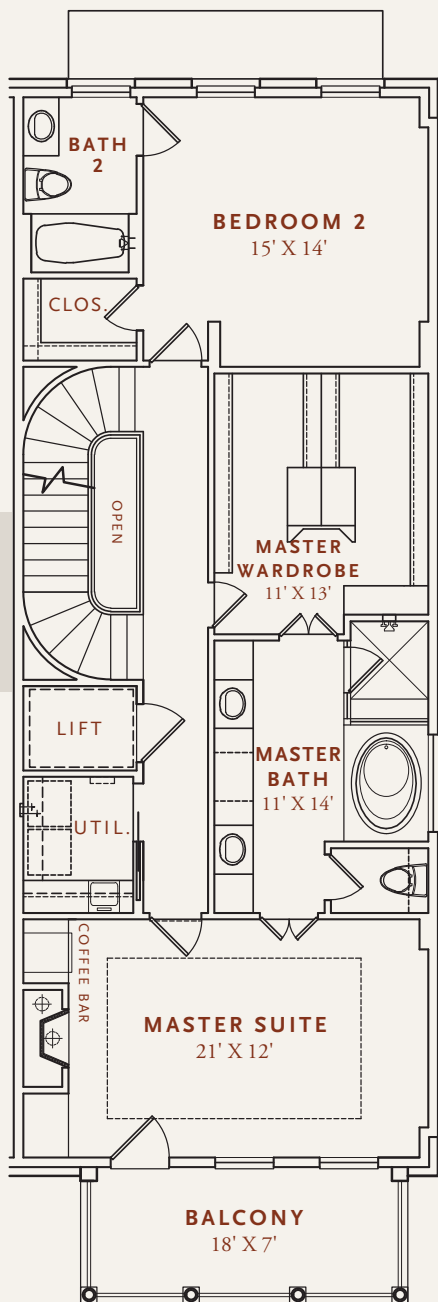


**CRAIN SQUARE**  
SOUTHSIDE PLACE USA

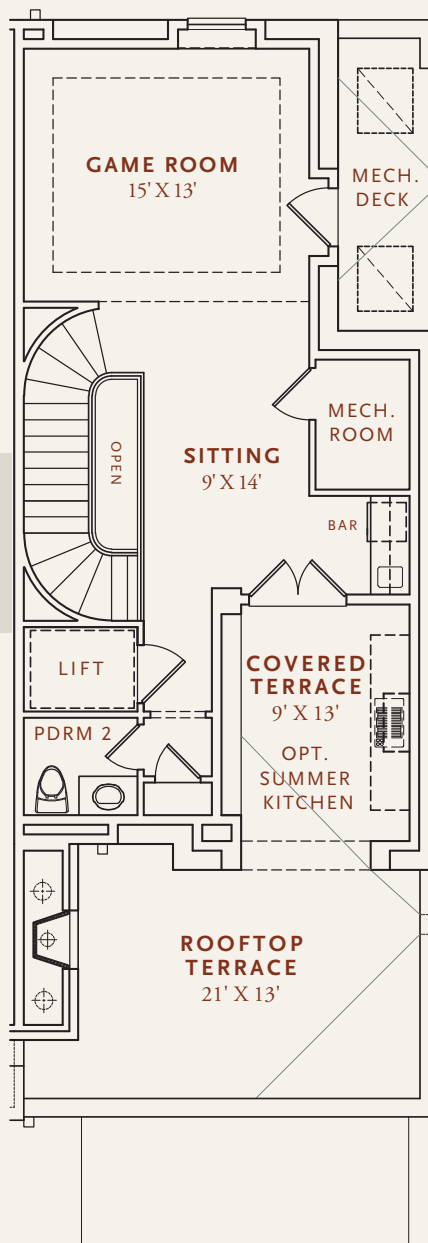
INDOOR: 3,816 SF | OUTDOOR: 853 SF

TOTAL LIVING: 4,669 SF

LEVEL  
3



LEVEL  
4



The third floor is highlighted by a Master Suite that includes a luxurious master bath and split oversized wardrobe closet as well as a third private Guest Suite that could be a nursery. The third private Guest Suite also comes in a Bunk Bedroom option perfect for elementary-aged children. The fourth floor features a large Game Room and Sitting Area with an adjacent Wet Bar and Powder Room. Get some fresh air by stepping out onto the fourth floor Rooftop Terrace, complete with a fireplace and optional Covered Summer Kitchen. And of course, each level is accessible with a custom elevator.

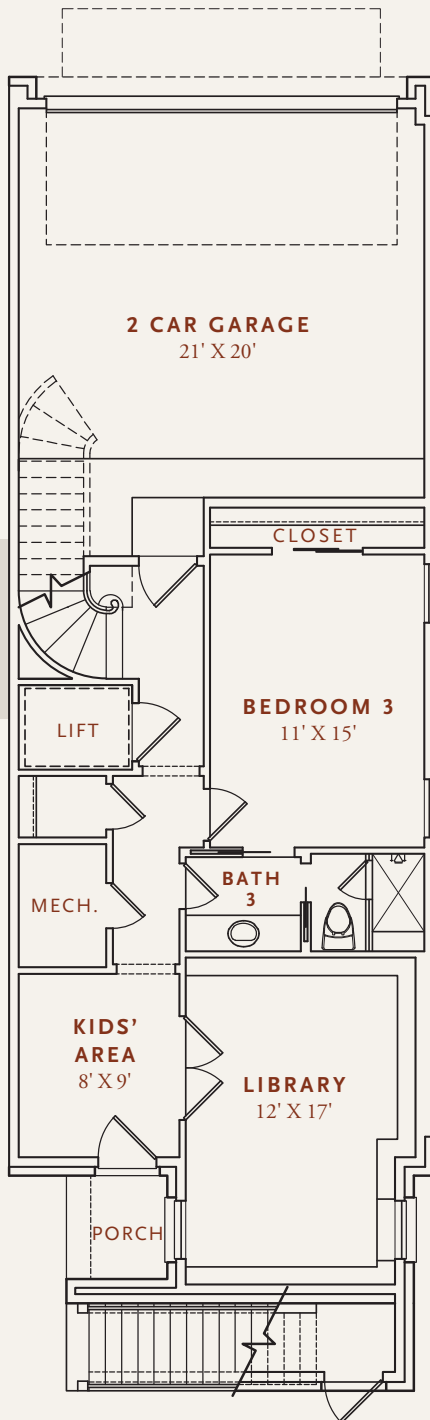


**CRAIN**  
SQUARE  
SOUTHSIDE PLACE USA

INDOOR: 3,816 SF | OUTDOOR: 853 SF

TOTAL LIVING: 4,669 SF

OPTION 1



OPTION 2



**THE JEFFERSON** The first floor Guest Suite of the Jefferson floorplan also comes in a Library option and the Kids' Area has a Kids' Study option.

Prices and specifications subject to change without notice. All renderings are an artist's representation. Please see a sales counselor for details. Print date 10/17

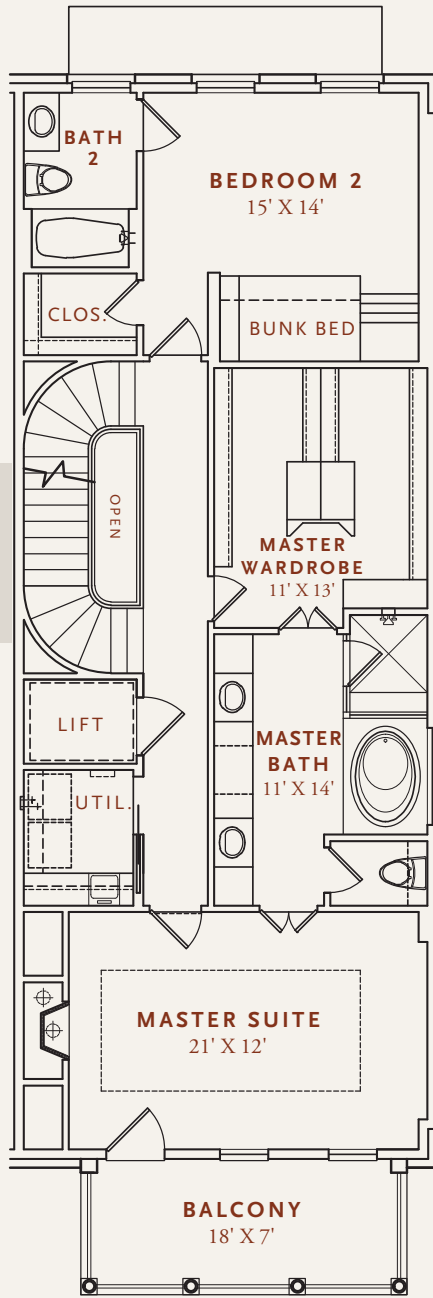


**CRAIN**  
SQUARE  
SOUTHSIDE PLACE USA

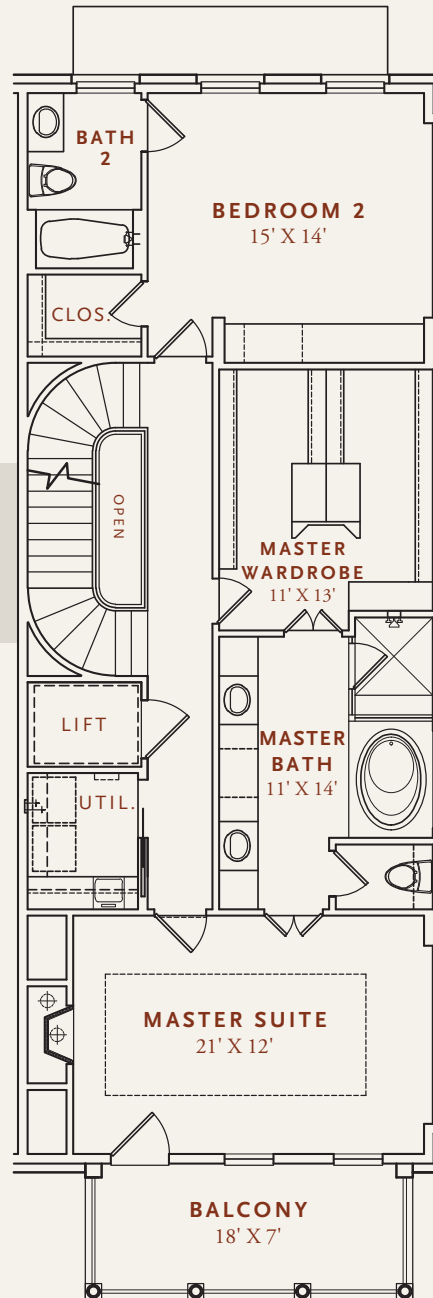
INDOOR: 3,816 SF | OUTDOOR: 853 SF

TOTAL LIVING: 4,669 SF

OPTION 1



OPTION 2



**THE JEFFERSON** The third floor private Guest Suite of the Jefferson floorplan also comes in a Bunk Bedroom or Study Area option perfect for elementary-aged children.

Prices and specifications subject to change without notice. All renderings are an artist's representation. Please see a sales counselor for details. Print date 10/17



**CRAIN**  
 SQUARE  
SOUTHSIDE PLACE USA



Prices and specifications subject to change without notice. All renderings are an artist's representation. Please see a sales counselor for details.

**CrainSquare.com**