

# 37 CRAIN SQUARE BLVD

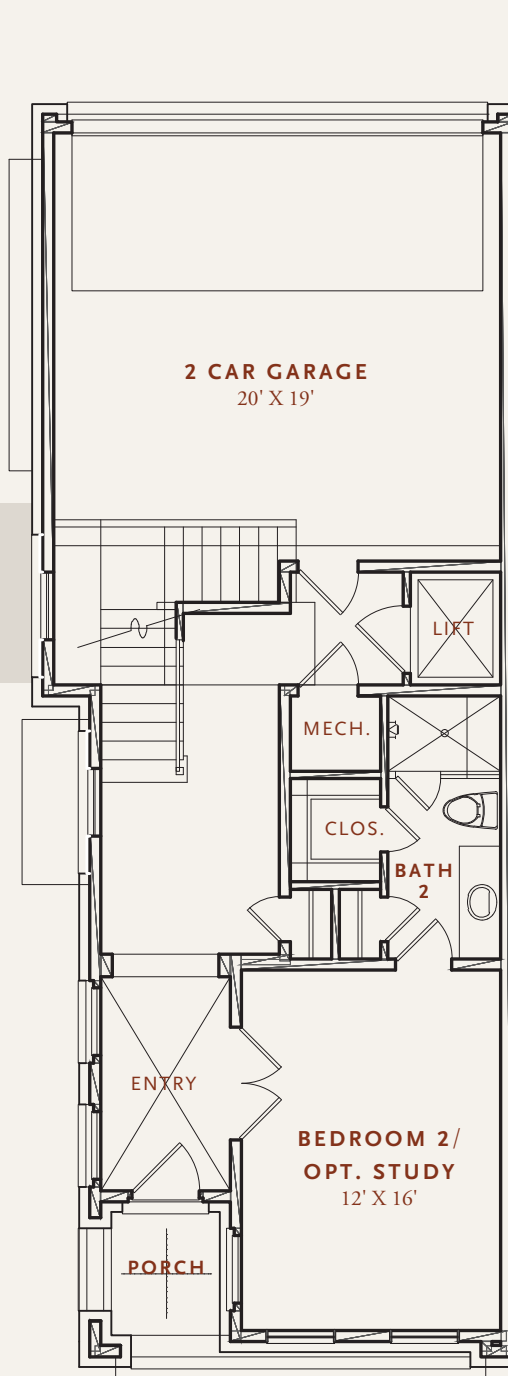
3 BEDROOM / 3 FULL BATH / 1 HALF BATH  
+ OPTIONAL POWDER ROOM

INDOOR: 3,030 SF | OUTDOOR: 382 SF

TOTAL LIVING: 3,412 SF

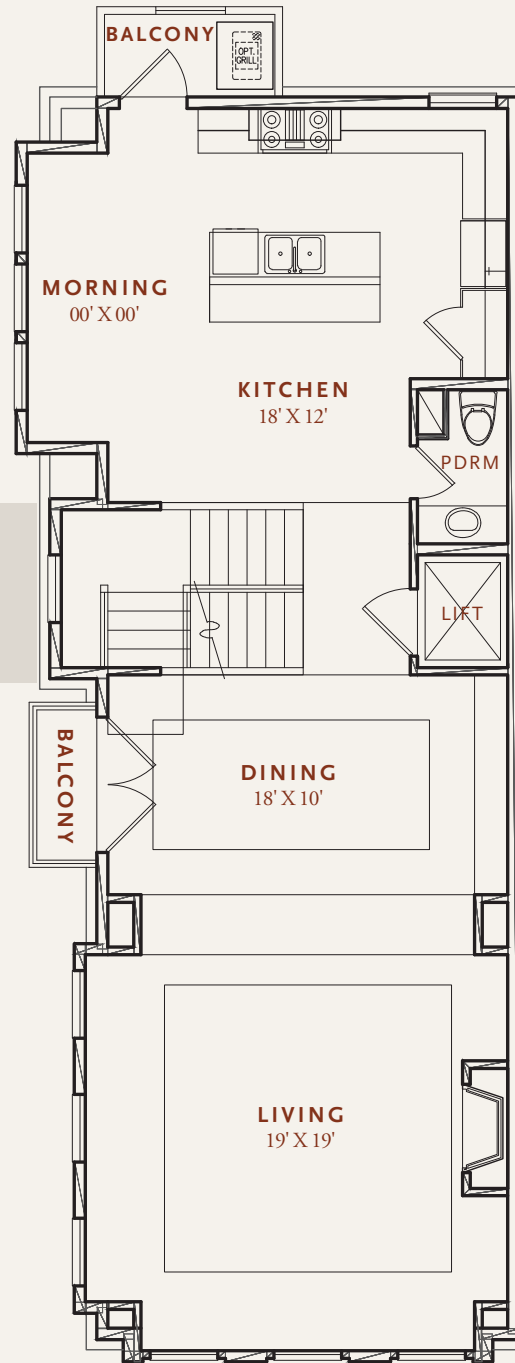
LEVEL

1



LEVEL

2



**THE McCOMB** A spacious 4 bedroom, 4 full bath and 1 half bath Southern Traditional Architecture inspired Crain Square home. The first floor consists of a guest suite that can be turned into a Study, and an oversized 2 car garage. The second floor features the main living and entertaining spaces with formal Living and Dining rooms, a Morning Room off the gourmet Kitchen, and two balconies.



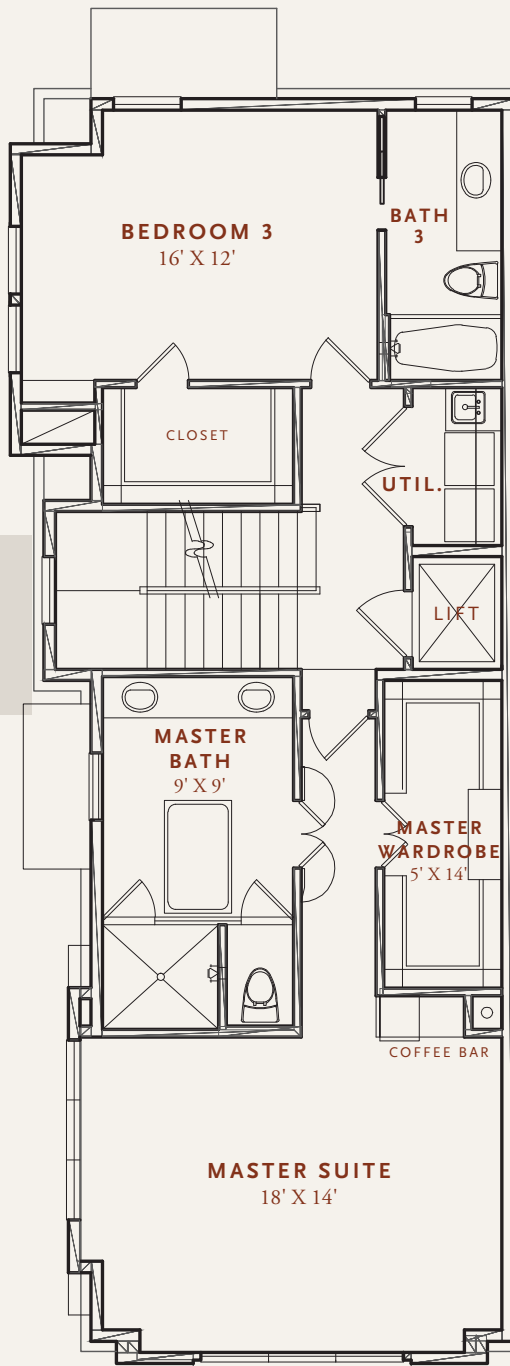
**CRAIN**  
SQUARE

SOUTHSIDE PLACE USA

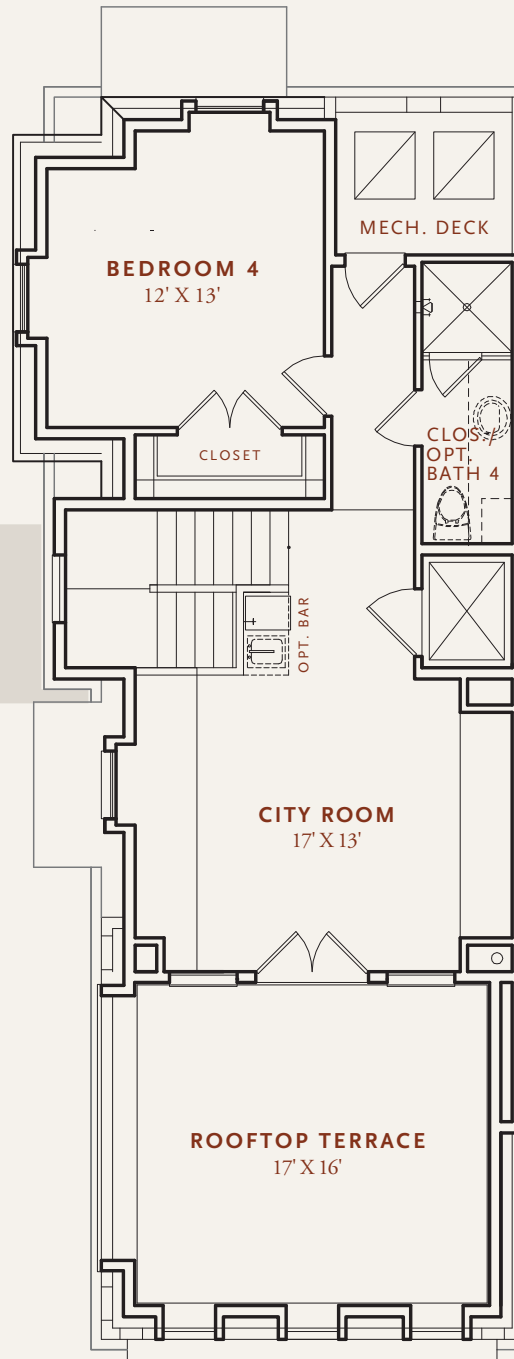
INDOOR: 3,030 SF | OUTDOOR: 382 SF

TOTAL LIVING: 3,412 SF

LEVEL  
3



LEVEL  
4



The third floor is highlighted by a Master Suite that includes a luxurious master bath, as well as a third private guest suite. The fourth floor features a fourth guest suite and large City Room with optional wet bar. Get some fresh air by stepping out onto the fourth floor Rooftop Terrace. And of course, each level is accessible with a custom elevator.



**CRAIN**  
**SQUARE**  
SOUTHSIDE PLACE USA



Prices and specifications subject to change without notice. All renderings are an artist's representation. Please see a sales counselor for details.

[CrainSquare.com](http://CrainSquare.com)